



Two Post Lift

Model: MAPOWER II 3.0 / 3.5

for passenger cars and commercial vehicles up to 3.5 t gross weight



Lifting Technology



ISO 9001
ISO 14001
ISO 50001
ISO/IEC 17025
SINCE 1969

- ▶ High stability of lifting columns
- ▶ Maintenance-friendly via long-term oil lubrication
- ▶ Short support arms with 180° swivel range
- ▶ Support arm with large lifting range
- ▶ Short support arms double extendable/telescopic (3.5 t standard, 3.0 t option)
- ▶ Permanent self-monitoring of all safety functions
- ▶ 5-year warranty on lifting screw and nut

**Premium Workshop
Equipment**

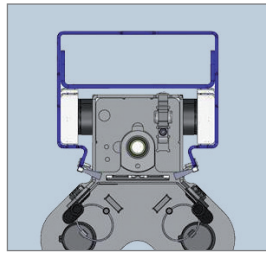
Product Advantages



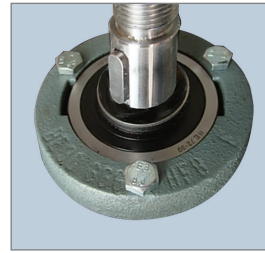
Lift control fully integrated in column, Operation field with robust foil keyboard. Option: Energy set 1x 230 V, 1x compressed air.



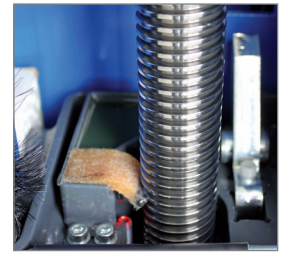
Columns turned by 45 °, offering greater door opening angle at the vehicle. Optimum door impact protection with rubber hose profile on lifting carriages.



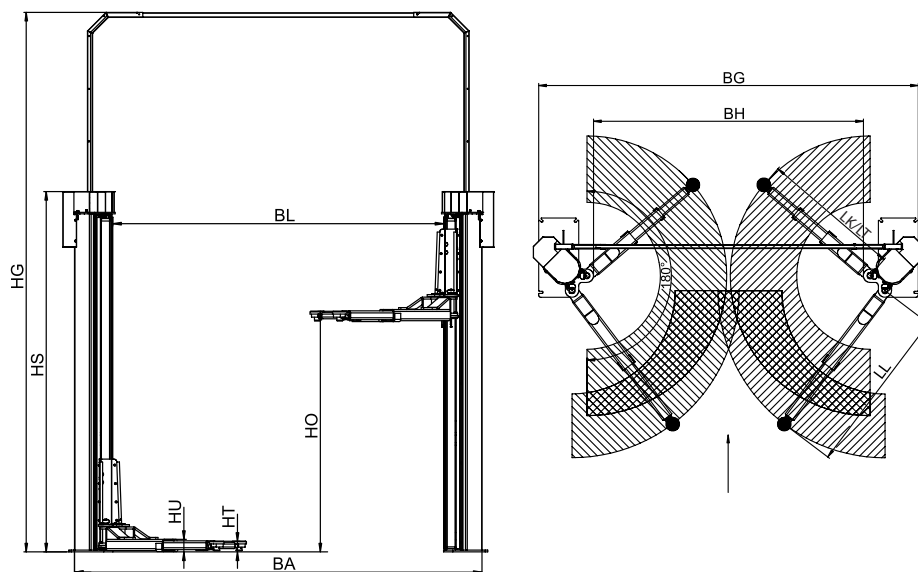
Lifting columns with rigidity-optimized external profile and additional reinforcing sheet.



Maintenance-free swivel bearing with lifetime lubrication for upper lifting screw support.



Maintenance-friendly via long-term oil lubrication.

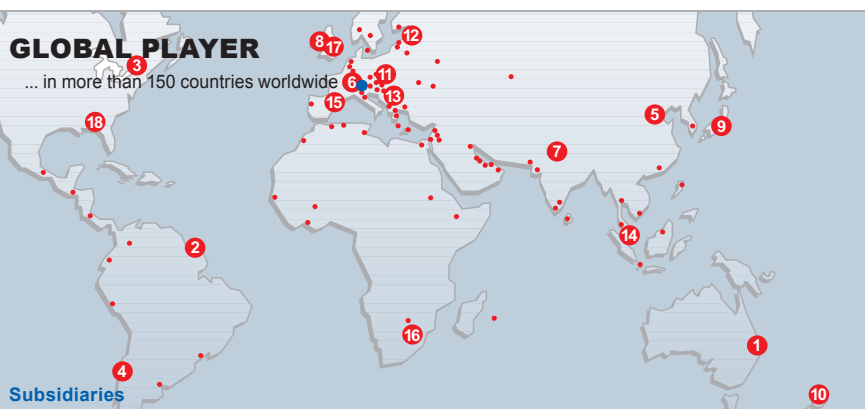


Technical Data	MAPOWER II 3.0	MAPOWER II 3.5		MAPOWER II 3.0	MAPOWER II 3.5
Load capacity	3000 kg	3500 kg	Outside columns BA	3228 mm	3328 mm
Lifting height max. HO	2000 mm	2000 mm	Inside columns BL	2600 mm	2700 mm
Raising/Lowering time load dep. ca.	40 s / 40 s	40 s / 40 s	Drive-through clearance BH	2330 mm	2430 mm
Bottom clearance HU	95 mm	105 mm	Net weight	620 kg	650 kg
Adjustment range of support plates HT	90 - 125 mm	90 - 125 mm	Drive Power	2 x 3.0 kW	2 x 3.0 kW
Reach of short support arms LK	555 - 850 mm	-	Power supply	3 x 380 V, 50 Hz	3 x 380 V, 50 Hz
Reach of short support arms LT	570 - 1160 mm	660 - 1260 mm	Fuse protection	16 A time-delay	16 A time-delay
Reach of long support arms LL	945 - 1505 mm	920 - 1505 mm	Cement quality	C20 / C25	C20 / C25
Overall width BG	3320 mm	3420 mm			

* Please pay attention to our extended warranty terms listed in the operating instructions

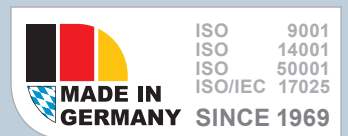
GLOBAL PLAYER

... in more than 150 countries worldwide



Subsidiaries

01 - Australia	05 - China	09 - Japan
02 - Brazil	10 - New Zealand	13 - Serbia
03 - Canada	07 - India	14 - Singapore
04 - Chile	08 - Ireland	15 - Spain
	12 - Russia	16 - South Africa
		17 - UK
		18 - USA



MAHA Maschinenbau Haldenwang GmbH & Co. KG
Hoyen 20 · 87490 Haldenwang · Germany

Tel.: +49 (0)8374-585-0 · Fax: +49 (0)8374-585-497
Internet: www.maha.de · E-Mail: sales@maha.de