



## SAFETY TEST LANE

MODEL: EUROSISTEM

### For Cars, Commercial Vehicles, Trucks, Buses and Two-Wheelers

- ♦ Fully automatic test procedure with operator guidance
- ♦ Windows®-based PC application for user-friendly operation
- ♦ MAHA modular design system for easy expansion
- ♦ PC network capabilities and ASA workshop network-compatible
- ♦ Connection to country-specific networks such as MCTC NET,
- ♦ GIEGNET, EBV etc. possible



# THE EUROSISTEM SAFETY TEST LANE FOR CARS, TRUCKS AND TW

THE "COMPREHENSIVE HEALTH CHECK"

The policy of extending maintenance intervals has been bearing fruit in the Service sector for a long time. The need for maintenance and repair work is declining. It is therefore all the more necessary not to squander any potential when taking in orders and when engaged in dialogue with customers. Test Lanes have a vital role to play in this. Only those who employ suitable means for conducting comprehensive health checks on a vehicle can provide incontrovertible evidence of the need for a repair, and can then go on to discuss the scope of that repair work with the customer. The same applies to final acceptance testing of a vehicle. Prior to the handover to the customer, the success of a repair can be documented. That creates transparency and trust.

## Cars



## Trucks

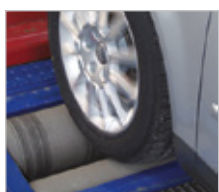


The EUROSISTEM Safety Test Lane offers (virtually) unlimited test options



Wheel alignment test

The MINC range checks axle geometry within seconds. The result often confirms the need for a wheel alignment check.



Speedo test

Any speedometer variance can be checked and documented by comparing nominal to actual speeds. In addition, the TPS test bench offers the option of a precise measurement of distance travelled.



Axle damping test

The MSD3000 test bench uses the Boge principle to establish the level of axle damping. The measurement result is expressed in a physical form, i.e. damping level "D". In addition, the test bench records and documents the weight of the axle.



Axle backlash test

The LMS/PMS tool enables defects and signs of wear to be detected rapidly on steering components, wheel bearings, suspension and chassis mountings. To accomplish this, the axle systems are tested by applying defined loads through hydraulically actuated test plates.



Brake test

The test sequence is more than just a "brake test". In conjunction with pedal or manual force sensors, and hydraulic or pneumatic pressure sensors, the entire functionality of the brake system can be checked. "EUROSISTEM" test software evaluates measuring results in a versatile range of ways.



Light test

The MLT 3000 digital headlight test uniquely identifies incorrect settings. The measurement results can be transmitted by wireless to a PC for documentation purposes. In addition, MLT 3000 offers a comprehensive range of help functions to make headlight adjustment a quick and convenient process.



## Motorbikes



**Performance test**

The LPS/FPS test provides a versatile range of options for actual performance measurement or just for the realistic simulation of road conditions, e.g. the testing of exhaust emissions.



**Clamping fixture**

Motorbikes can be held firmly in position on the test stand (i.e. elevating platform) using the semi-automatic clamping fixture.

## Communication panel



**Industrial PC**



**Side shelving (option)**



**Flat design ensures that minimum space is occupied**

## The "MCD" communications panel

... is the "brain" of the test facility with:

- ♦ convenient databases for registration of vehicles and customers
- ♦ communication and network program.
- ♦ user-friendly Windows® interface

... and takes charge of:

- ♦ Activation and data administration of all connected test devices and external devices.
- ♦ Display and printout (option) of all transmitted measuring values.
- ♦ Management of all networked data terminals.

## EUROSYSTEM

PC network technology for connecting an unlimited number of data terminals. The operator has the following advantages:

- ♦ Time-saving „one-time only“ input of customer and vehicle data
- ♦ Central data management reduces the possibility of errors
- ♦ Optimization of the working processes for administrators, technicians and masters
- ♦ Permanent control of workshop orders offers reliability for workshop and personnel planning
- ♦ Rationalization success with resulting increase in workshop utilization and improvement in earning potential
- ♦ Airtight history of all relevant measurement and test data as well as target/actual documentation.
- ♦ Networking of test equipment with other workshop systems through a network, e.g. commercial software, time recording, spare part procurement etc.





## EUROSYSTEM

High-Tech with Module Control in LON Machinery Network

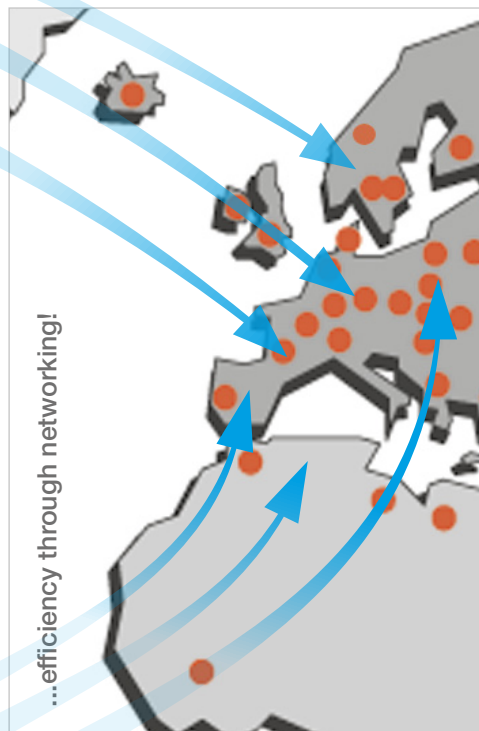
Each floor group has its own control module as programmable electronic unit.

All control modules of the connected floor groups and external devices are connected by the LON machinery network. Module technology assures trouble-free adaption and/or retro-fitting of any number of devices.

## EUROSYSTEM

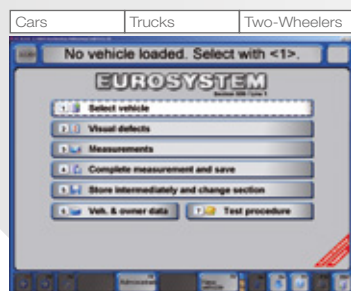
... worldwide PC connection via Internet

Worldwide communication with your test lane is possible with remote data transmission, e.g. for data exchange, for long-distance diagnosis, for Online help or integration into country-specific networks such as MCTC NET, GIEGNET, EBV etc.

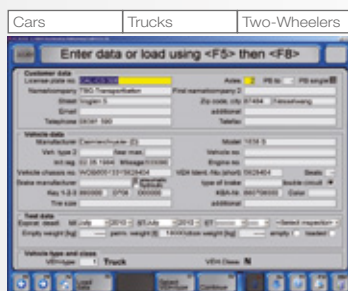


# EUROSYSTEM SOFTWARE

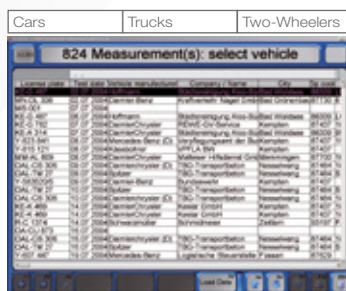
The user-friendly EUROSYSTEM test software provides convenient databases and a versatile range of options for evaluating test results. In addition, various braking force parameters are displayed numerically.



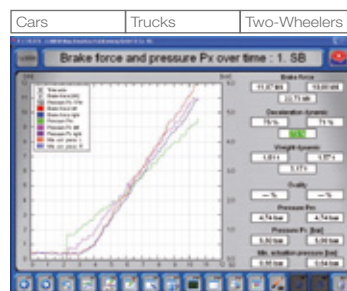
**Program Menu**  
Simple operation with user-friendly Windows® based menu design



**Customer Data Mask**  
Vehicle and holder data input



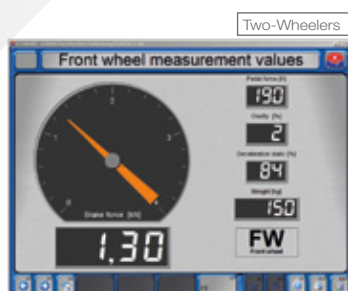
**Databases**  
Extensive databases with customer and vehicle-specific datasets



**Graphical Brake Evaluation**  
Clear display of the brake values with graphical and digital evaluation



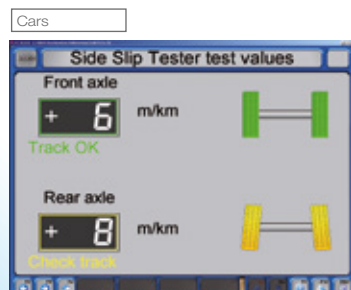
**Brake test**  
During the brake test, all relevant data are presented clearly. In addition, the various braking force parameters are displayed digitally.



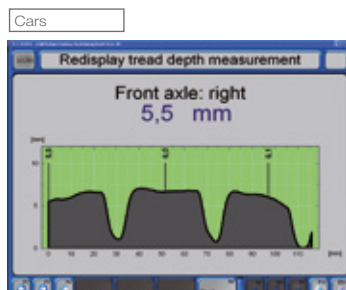
**Shock absorber Test**  
Clear graphical and digital display of measurement values



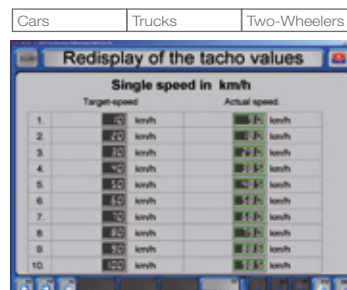
**Headlight Test**  
Digital determination of headlight setting by means of CMOS camera



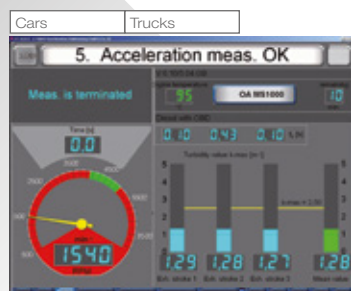
**Side-Slip Test**  
Clear display of vehicle axle directional stability



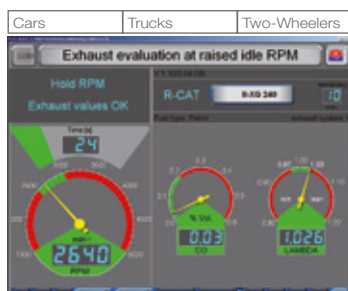
**Tread Depth**  
The tire tread depth measurement device TM 1000 automatically measures the tread over the entire tire circumference and width.



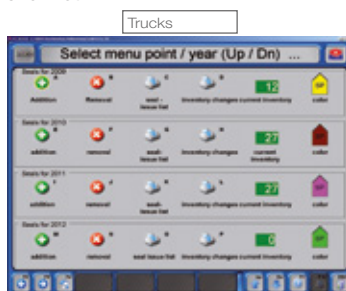
**Speedo test**  
Digital display of nominal and actual speeds. Additional "distance covered" (odometer) measurement also possible.



**Diesel Emission Test**  
Clear display of measurement value results of diesel emission test



**Four/ Five Gas Test**  
Overview of measurement values of the four/ five gas test



**Test Seal Administration**  
Fully automatic administration of the test seals with inventory proof. Additional memory function for ST and MI deadlines with customer vehicles.



# TECHNICAL DATA

## CONTROL UNIT DISPLAY

display unit	PC screen, optionally via TV screen, simultaneous display, wireless touchscreen
control	Fully automatic with communications panel MCD 2000 or MCD 1000
Dimensions of communications panel (W x H x D)	860 x 1230 x 350 mm
Dimensions of communications panel (W x H x D) with printer slot	860 x 1500 x 420 mm

## BRAKE TEST BENCH

	CARS			TRUCKS		TWO-WHEELERS	
		MBT 2250	MBT 3250		MBT 4250	MBT 7250	MBT 1000
Roller set	no. 2	no. 5	no. 5	no. 1	no. 2	no. 1	no. 2
dimensions in mm							
Length	2320 mm	2925 mm	2925 mm	2005 mm	1236 mm	2225 mm	1427 mm
Width	680 mm	680 mm	680 mm	765 mm	1043 mm	862 mm	1142 mm
Height	280 mm	280 mm	280 mm	280 mm	550 mm	400 mm	700 mm
Axle load and/or wheel load (drive-over)	3.5 t / 4 t*	5 t	8 t	13 t / 15 t*	18 t / 20 t*		
Rated power	2 x 3 kW, 2 x 4 kW*	2 x 4 kW	2 x 5.5 kW	2 x 9 kW, 2 x 11 kW*	2 x 11 kW, 2 x 16 kW*		
Test speed	5 km/h	5 km/h	5 km/h	2.3 km/h bzw. 4.6 km/h*	3 km/h bzw. 6 km/h*		
Measuring range	0 - 6 kN	0 - 8 kN	0 - 16 kN	0 - 40 kN	0 - 40 bzw. 60 kN*		
Display precision				2 % of measuring range end value, 2 % difference left/right		2 % of measuring range end value	
Roller centre distance	400 mm	400 mm	400 mm	430 mm	475 mm		
Roller length	730 mm	1000 mm	870 mm	1000 mm	1150 mm	350 mm	1100 mm
Roller diameter	202 mm	202 mm	202 mm	202 mm	265 mm		
Power supply						3 x 400 V / 3 x 230 V*, 50/60 Hz	
Fuse protection		25 A	35 A		50 - 80 A		25 A

## AXLE BACKLASH TESTER

	CARS	TRUCKS
	PMS	LMS
Testable axle load	3.5 t	20 t
Movement on each side	max. 100 mm	max. 100 mm
Dimensions of test panel (L x W x H)	625 x 625 x 150 mm	750 x 750 x 232 mm
Power supply / fuse protection	3 x 400 V, 50/60Hz / 16 A	3 x 400 V, 50/60 Hz / 16 A

## WHEEL ALIGNMENT TESTER

	CARS	TRUCKS
	MINC I EURO	MINC II EURO
Testable axle	3 t	15 t
Measuring range	0 - 20 m/km	0 - 20 m/km
Dimensions (L x W x H)	1020 x 460 x 80 mm	1020 x 770 x 135 mm
Power supply / fuse protection	230 V, 50/60 Hz / 10 A	230 V, 50/60 Hz / 10 A

## AXLE DAMPING TEST BENCH

	CARS	TRUCKS
	MSD 3000	MSD 3000
Testable axle load (normal / reinforced)	2.2 t	2.2 t
axle load (drive-over)	2.5 t	13 t
Rated power	1.1 kW	1.1 kW
Excitation frequency	2 - 10 Hz	2 - 10 Hz
Plate stroke max.	70 mm	70 mm
Measuring range of damping dimension "D"	0.02 - 0.03 (no units)	0.02 - 0.3 (no units)
Track width min. / max.	880 / 2200 mm	880 / 2200 mm
Dimensions (W x D x H)	2320 x 800 x 280 mm	2320 x 800 x 280 mm
Power supply / fuse protection	230 V / 1 Phase, 50/60 Hz / 10 A	230 V / 1 Phase, 50/60 Hz / 10 A

\* optionally available \*\*only in conjunction with Dynamometer  
Refer to price list for further technical data!



Pedalforce Meter PFM 1000



EC Tachograph Test Device



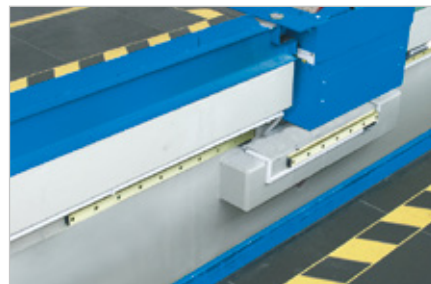
Mobile Radio Touchscreen FTS 2016



Emission Tester for diesel-, Gasoline and Gas Powered Otto Engines MET 6.3



Noise Level Meter SE-402



Pit Safety GSQ



Radio Pressure Converter and Remote Control



Headlight Setting Device MLT 3000



Closing Force Meter SKM 2



Speed Limiter Tester SLT

## GLOBAL PLAYER

... in more than 150 countries worldwide

### Subsidiaries

Australia  
Canada  
Chile  
China

France  
India  
Ireland  
Japan

New Zealand  
Poland  
Russia  
Singapore

Spain  
South Africa  
UK  
USA

UAE  
Vietnam

**MAHA Maschinenbau Haldenwang GmbH & Co. KG**  
Hoyen 20 | 87490 Haldenwang | Germany

Phone +49 8374 585 0

Fax +49 8374 585 497

sales@maha.de | www.maha.de